

Certify Data™ Automated Test Data Management

Historical Challenges

- Up to 60% of the test automation effort may be spent on obtaining and validating test data
- Test data management is labor-intensive and requires the involvement of many outside resources including IT, security personnel, business analysts and subject matter experts.
- Test data has a limited period of validity, thus making acquisition costs recurring
- Bulk test data management tools are often complex, costly and overkill

Solution Highlights

- Simplifies test data selection and extraction during test case construction
- Context-sensitive data selection with single-row and multiple-row support
- Automates test data refreshment for end-to-end business process tests
- Designed for business process experts and business analysts
- Specialized for use with SAP® applications

SAP® Certified
Integration with SAP NetWeaver®



Extraordinary Costs of Test Data Management

It is estimated that up to 60% of the test automation effort is spent finding and extraction representative test data. Historically, obtaining test data has been a manual and labor-intensive task requiring the involvement of many outside resources including IT, security personnel, business analysts and subject matter experts. Once obtained, this test data has a limited period of validity, thus making the acquisition costs expensive recurring over time.

Simplifying Test Data Management for use with SAP® Applications

To reduce the time and costs involved with creating and maintaining end-to-end business process tests, it is essential to obtain valid test data using a simple, repeatable and accurate method. Certify Data™ is an innovative new test data management solution designed to automatically identify and extract representative SAP data so that it can be directly embedded into Worksoft Certify® during test case construction. Over time, Certify Data will help customers maintain test data by performing automatic test data refreshes directly from within Worksoft Certify, drastically reducing data acquisition costs.

Certify Data helps you quickly create reusable, end-to-end business process tests that will improve the quality and coverage of your automated testing initiatives while reducing the time, cost and risk across many SAP lifecycle events—including upgrades, enhancement packs, consolidations and other business process application changes.

Solution Benefits

- Minimizes the initial and recurring costs incurred for test data acquisition and validation.
- Simplifies the process of creating and maintaining end-to-end business process tests.
- Enables end-to-end SAP business process tests that are self-sufficient and can run in an unattended or “Lights Out” mode.
- Developed with the non-technical user in mind, it is perfect for SAP Business Analysts, Business Experts and Subject Matter Experts (SMEs).

System Requirements

- Worksoft Certify® Version 8.5.1 or above
- Microsoft® Windows 2003 or above
- Microsoft® Internet Information Services (IIS) v6.0 or above
- Microsoft® ASP.NET v2.0
- Microsoft® .NET Framework v3.5 SP1 or above
- Microsoft® SQL Server 2005 SP3 or Microsoft® SQL Server 2008

Key Features

- Easy-to-use graphical user interface that allows business analysts and Worksoft Certify users to select representative test data from the underlying SAP database.
- User search and context sensitive data extraction based on SAP screen and field.
- Support for single row or multiple row extraction.
- Automated test data refresh supported from within Worksoft Certify.
- Complements Worksoft's other market leading lifecycle management solutions including Certify Performance Test™, Certify Executive Dashboard™, Certify Business Process Procedure™ and Certify eSignature™.

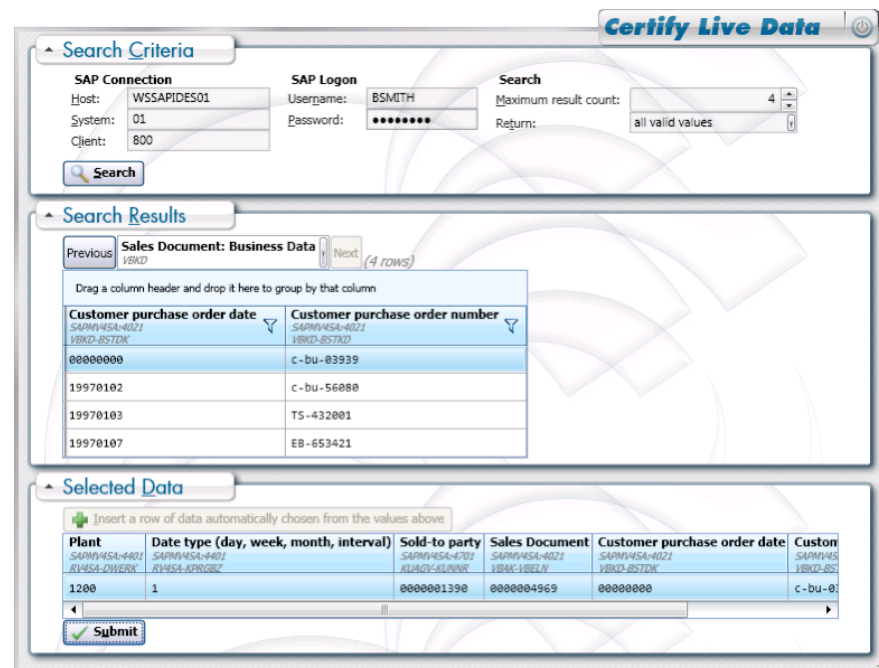


Figure 1: Certify Data – Search and Data Selection interface

About Worksoft

Worksoft® develops innovative enterprise lifecycle management solutions that significantly reduce deployment times, reduce risk of application failures and improve business agility.

Contact Us

Worksoft Inc.
 15851 Dallas Parkway Suite 855
 Addison, Texas 75001
 (main) 214.239.0400
 (toll) 866.836.1773
 info@worksoft.com
 sales@worksoft.com
 www.worksoft.com

Certify Data is a key product in Worksoft's application lifecycle management suite and a critical tool for creating reusable, end-to-end business process tests. By simplifying test data management, you can improve the quality and coverage of your automated testing initiatives while reducing the time, cost and risk across many SAP lifecycle events.

Bottom line, Worksoft provides the confidence and assurance required to deliver new SAP functionality faster and with higher quality—resulting in reduced risk in ongoing SAP operations and a material improvement in business agility.

Worksoft and Worksoft Certify are registered trademarks of Worksoft, Inc. All other trademarks and names are property of their respective owners.